

## 1. GETTING STARTED

Things to do (and not to do) when setting up your mattress for the first time.

### The Don'ts

• **Don't carry your mattress flat.** Tip it on its side. It's easier to handle and less likely to damage the mattress.

• **Don't bend your mattress** under any circumstances. It may damage the innerspring unit. Flex, rather than bend the mattress when going through doorways.

• **Don't remove the label** off your mattress. This serves as a means of identification to establish your Warranty/Guarantee rights.

• **Don't place a board between the mattress and foundation.** Your sleep set is specifically designed to provide you with the correct support.

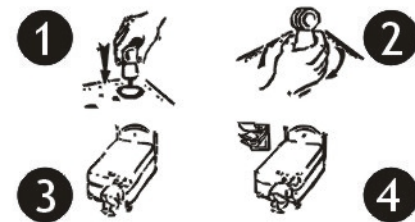
• **Don't let anyone stand or jump on your mattress.** It was not designed to take this kind of treatment and it voids the Warranty/Guarantee.

### The Do's

• **Do dispose of plastic bags immediately.** Make sure children never use these bags as play things. There are no air vents and a child may suffocate.

• **Do recycle plastic bags.** Bags are polyethylene and are suitable for recycling.

**Do follow these leg and castor assembly instructions** for the mattress base



1. Turn foundation or base of bed upside down and insert pin into hole and turn clockwise. Repeat for all legs.
2. Tighten by hand until legs are firmly in place.
3. Turn foundation back over and re-tighten legs, as tight as possible by hand.
4. Re-check legs for tightness every 3 months

**Important:** it is the purchaser's responsibility to tighten the legs and castors to ensure the bed is set up as intended. The warranty/guarantee is voided if this is not performed as recommended.

• **Do plan to keep your mattress clean.**

• **A mattress protector** is a good idea, especially if children uses the bed.

• **Do plan to keep your mattress dry.** Protect it from water and other fluids. A waterproof sheet or fitted waterproof cover under the mattress protector may be useful for children's beds.

• **Do plan to replace your foundation when purchasing a new mattress.** An old foundation may not provide sufficient support. It may appear that your new mattress is sagging when the problem really lies with the old foundation providing inadequate support.

• **Do check the support under your mattress.** If you have only bought a mattress, make sure the support you plan to use it is in good condition. If you use a hard, unyielding wooden frame, or a wire support that sags or is uneven or too soft, your brand new mattress may well be damaged.

• For the better performance of your mattress, we strongly recommend the use of an appropriate Manufacturer Foundation, which has been especially designed to work with your mattress to deliver the right support.

• **Do remember it takes up to 30 days for your body to adjust to the feel and support of a new sleep system.**

## 2. FOR YOUR SAFETY!

• **Don't ever place this product near open flame or expose it to fire.** This mattress is not flame proof or fire proof and can ignite or burn if exposed to open flame or fire. When ignited, some bedding materials can burn rapidly and emit smoke and hazardous gases.

• Don't smoke in bed.

## 3. ON-GOING BEDDING CARE

Here are things you need to do regularly to care for your new mattress.

### The Don'ts

• **Don't ever use dry cleaning fluid** of any type on your mattress. chemicals will damage some of the construction materials.

• **Don't bend your mattress** under any circumstances.

• **Don't let anyone stand or jump** on your mattress.

• **Don't flip one sided mattresses,** rotate only.

### The Do's

• **Do check your bed legs** and re-tighten if necessary.

• **Do turn your mattress** end for end and upside down.

• **It is recommended that a timber slat protector or other insulating material be used** between the mattress and slat base, to prevent damage to the mattress cover from rough knots and unbevelled edges from timber slats.

• **When you need to turn your mattress.** The materials used in this mattress are designed to conform to your body's individual contours. Body indentations are a normal occurrence and indicate that the upholstery layers are performing as they should. Regular turning gives uniform wear to each side of the mattress, adjusts the sleeping surface evenly and prolongs mattress life. It is the purchaser's responsibility to turn the mattress in the manner specified to ensure validation and compliance with these Warranty/Guarantee provisions.

• **When to turn your mattress.**

Every two weeks in the first three months once a month thereafter.

## TURNING INSTRUCTIONS FOR 2 PEOPLE

• **Do not attempt to turn your mattress by yourself.** This may cause personal injury or damage to your mattress.

• Do not use the handles to turn the mattress. Handles should be used ONLY to position the mattress. They may pull out if used to support the full weight of the mattress.

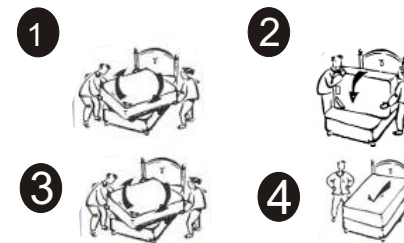
To ensure your mattress is turned and rotated properly and safely, please follow these instructions.

1. Grasp the mattress corners and spin the mattress clockwise 90 degrees across the base.

2. Tip the mattress up on its edge. Then roll it over so a new sleeping surface is presented.

3. Now grasp the mattress corners and rotate the mattress clockwise until the mattress is again aligned with the base.

4. Your mattress has now been turned end for end and upside down.



## Transport charges

if the mattress is found to be defective, the Manufacturer will pay for it to be transported back to the factory and returned to the customer (in the first 12 months) for the remainder of the Warranty/Guarantee, the mattress will be transported if the customer agrees to pay 40% of the delivery charges. In no case will any transportation charges be accepted without prior approval from the Manufacturer. All claims in respect of this Warranty/Guarantee are to be made to the store from which the Product was purchased prior to the expiry of this Warranty/Guarantee.

**THIS WARRANTY/GURANTEE COVERS**

This Warranty/Gurantee covers the following specific manufacturing faults under the conditions of normal wear.

**Mattress**

- Coils or wires that are loose or broken
- Coils or wires that protrude or tear through any fabric

**Foundation**

- Splitting occurring in the wooden frame.
- Loose or broken foundation wire
- Compression of modules
- Leg and/or castor failure

**THIS WARRANTY/GURANTEE DOES NOT COVER**

1. Covers including stains, soiling or burns.
2. Body indentations which are normal occurrence and indicate that the upholstery layers of the mattress are performing as they should. It is not recommended to sit on the edge of the mattress, this can cause the border to sag over a period of time.
3. Body impressions are not considered as manufacturing faults. Pillow Top mattresses can have up to 40mm in height loss and Non Pillow Top mattresses can have up to 25mm height loss. These height losses are considered normal wear and tear as the mattress filling is adjusting to the contours of your body.
4. Handles which should be used only to position the mattress and may pull out if used to support the full weight of the mattress. Border wires, which run along the perimeter of the mattress and foundation, bent due to moving or bending of the mattress or base
5. Bedding sold as is.
6. Bed height.
7. The mattress if used on a slat type foundation, where the slats are more than 60mm apart and less than 30mm in thickness.
8. When product failure is due to causes other than defective workmanship or material.
9. Bent or broken castors or legs, loose T-nuts inside base, caused by castor legs not having been kept sufficiently tight.
10. Comfort preference
11. Smell (some raw materials used in the mattress have a natural smell)
12. Mattress damage due to an inappropriate foundation. A mattress is designed for full performance when used in conjunction with a matching Manufacturers foundation as part of a total sleep set.

13 Sheet fit.

14. Replacement of another piece in the sleep set, unless such other Piece is also defective.

15. Mattress or foundation damage due to abuse.

**THE BENEFITS**

The benefits conferred by this warranty/Gurantee in addition to all other rights and remedies in respect of the product which the Purchaser has under the Trade Practices Act (Commonwealth) 1974 and similar State and Territory laws.

**The Registration Card**

To obtain the benefit of this Warranty/Gurantee, complete the attached Warranty/Gurantee Registration Card and store in a safe place with the proof of purchase.

**Original purchases only**

The Manufacturer offers a Warranty/Gurantee on this bed, it only applies to the original purchaser of the product.

**During the term of the Warranty**

If there is a manufacturer's fault within the first 1/3 of the nominated warranty period we will repair it without charge to the customer. For the remaining years that the Warranty is active, the repair will be done only if the customer agrees to pay 40% of the repair fee. The Manufacturer reserves the right to send a representative to inspect the mattress before it is picked up. The Manufacturer reserves the right to refuse a warranty claim if it is found that upon inspection there is no manufacturer fault.

**During the term of the Guarantee**

if there is a manufacturer's fault within the nominated guarantee period we will repair it without charge to the customer.

**Availability of identical Materials**

If identical materials are not available at the time of repair or replacement, the Manufacturer reserves the right to substitute materials of equal quality.

Please complete and retain this card for future reference with the original receipt of purchase.

**FOR WARRANTY/GURANTEE CLAIMS, CONTACT PLACE OF PURCHASE.**

Date purchased: \_\_\_\_\_

Retailers Name: \_\_\_\_\_

Address: \_\_\_\_\_

Thank you for purchasing this quality product from:

*SensorPedic*™

**Excellence in comfort and support**

**Manufactured by Bachra Manufacturing trust**

**Excellence in comfort and support**

**Warranty or Gurantee as indicated on invoice**  
 These care instructions should be followed carefully as they can extend the life of the bed